



The educational package
A new start for taking part



DEAR CITIZENS,

The educational package offers greater future opportunities to 2.5 million needy children from low-income families. They now have a right to education and social participation. As of now they can take part in sports, music and cultural activities as well as go on school trips and have lunch with fellow pupils in day care and after-school care centres and in schools. They will receive the educational materials they need and the necessary learning support if they are at risk of having to repeat a year. The Federal Ministry of Labour and Social Affairs, the district and city authorities, the job centres and their local partners together will ensure that children benefit from the educational package.

The educational package is based on the central theme of providing opportunities. The children have a right to this. It is worth us doing all we can for the children and their prospects in life. I would like to invite you to join me.

Ursula von der Leyen, Federal Minister of Labour and Social Affairs

Laura, Niklas, Tobi and Julia can now take part, too.

Playing football for the local club, having lunch in the school canteen or going on a class trip to the zoo were previously not an option for Laura, Niklas, Tobi and Julia. For them, taking part was often impossible for financial reasons. Things are changing with the educational package.



LAURA, 12



NIKLAS, 8



TOBI, 14



JULIA, 10

Read on to find out which new opportunities are being opened up for these girls and boys. See for yourself how uncomplicated and easy to use the range of services offered by the educational package is.

Children have a right to the educational package if they or their parents

- ▶ qualify for benefits according to Book Two of the German Social Code (particularly **unemployment benefit II** or **social allowance**),
- ▶ receive **social assistance** according to Book XII of the German Social Code or section 2 of the **AsylbLG** (German Asylum Seekers Benefits Act) or
- ▶ **children's allowance according** to the BGGG (German Federal Child Benefit Act).

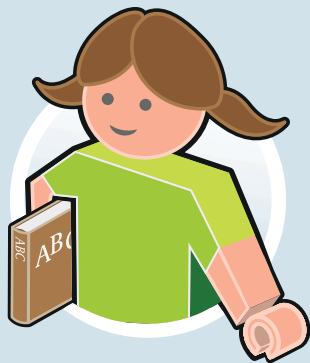
The educational package is valid retrospectively from 1 January 2011. For services which have already been used, a refund can also be requested up to 30 June 2011 (other provisions apply to families who receive children's allowance or housing benefit).

Today, Laura is getting on better in her English lessons.



Geography is her favourite subject and she also likes fractions and dictation. Recently she even started enjoying English. Laura was having difficulty with the subject, she could hardly keep up and was at risk of having to repeat the year. However, things have changed since she started taking private tuition on Wednesdays. She learned a few tricks on how to remember vocabulary more easily. When it comes to her homework, the tutor also makes sure that she has properly understood the exercises. She is now determined to get a better mark in the next class test to ensure she can move on to the next year. Laura's progress was made possible thanks to the educational package. And it has helped her enjoy her English lessons, too. Almost as much as geography.

Learning support



HOW YOU CAN TAKE PART:

- ▶ Make a point of regularly asking your child about their results in class tests and other work. In what subject is he or she having problems?
- ▶ Get in touch with the teachers. Do you have any tips on how your child could get on better in class? Does the school offer a range of free support services?
- ▶ Is there a particular risk of having to repeat a year and is no other support available at your child's school? Then your child has a right to learning support. Have the teacher confirm that your child needs additional support.
- ▶ Submit an application at the *job centre**. The learning support component applies to a concrete range of services, several hours of private tuition or an entire course.

* Please read the information on page 14.

TIPS FOR TEACHERS

- ▶ Once the school confirms that a child cannot achieve a learning goal without support, private tuition is paid for from the educational package.
- ▶ Ensure that families are made aware of any difficulties in class at an early stage.
- ▶ Let families in need know of the new range of services! It applies to all school children up to their 25th birthday.

Niklas now has lunch at school with his classmates.



His school day gets going at 7.45. Maths, German, Art and then a double period of PE – all part of his Monday timetable. It's no wonder, therefore, that Niklas can't wait for lunch in the canteen. He'll enjoy a hot meal, and what's more he can sit together with his friends. In the past, however, things were different. There wasn't always enough money for school dinners.

Lunch at day care centres, schools and after-school care centres



HOW YOU CAN TAKE PART:

- ▶ Does your child's school, day care or after-school care centre offer regular, hot meals at lunchtime? Then your child can now have one, too. For this you will receive an allowance.
- ▶ The *job centre** will pay the allowance for dinner in the canteen. The family share of the costs is one euro per child per day.
- ▶ Children attending school or a day care or after-school care centre may receive the allowance.
- ▶ Please note that when you register your child for canteen dinners you will receive a voucher. You will need this for the *job centre**.

* Please read the information on page 14.

TIPS FOR SCHOOLS, DAY CARE AND AFTER-SCHOOL CARE CENTRES

- ▶ Provide written confirmation for needy children when registering for meals.
- ▶ Let families entitled to benefits know of the new range of services!



Tobi is now scoring goals.

On Thursdays he is especially glad when the weather is good. For Thursdays mean football training and, if the weather's good, they can play outside on the grass pitch. For two hours it's then all about technique, condition and scoring goals. Having a regular game of football is nothing new for Tobi. However, until now he was only able to play it during sports lessons or in the car park, as there was not enough money at home to pay for the club fees. This has now changed with the educational package. Tobi is now playing with his friends in the C Juniors league. His trainer is there not just to make sure the rules are followed, but to give practical tips, too. As a result, Tobi has made rapid progress. His next goal is to win on Saturday. Preferably when the weather is good.

Cultural, sports and leisure activities



HOW YOU CAN TAKE PART:

- ▶ Taking part in cultural, sports and leisure activities is all possible. A monthly allowance of ten euros is given to every child up to his or her 18th birthday for this purpose, for example for music lessons, football or athletics clubs, scouting or other leisure activities.
- ▶ Have a chat with your child about what he or she may be interested in trying out.
- ▶ Perhaps their friends are members of a specific club? Ask your child if they would also like to join.
- ▶ Ask in school, too, if any of the teachers have noticed particular strengths or interests your child has shown.
- ▶ Contact your local *job centre**. They will provide you with tips and information on which activities your child can take part in.

*Please read the information on page 14.

TIPS FOR CLUBS, ASSOCIATIONS AND INITIATIVES

- ▶ If your club, association or other service wishes to take part in the educational package and provide opportunities to children in need, please contact your *job centre**. They will be only too pleased to help.

Julia is now off on a voyage of discovery.



Today is a special day for her. Her class is going to the zoo – and Julia is going with them. Class 4a regularly has days-out like this. Last time they visited a children’s theatre, the time before that they went to a climbing activity park. Like some of the other children Julia almost never went on day trips, as the family budget did not stretch to such things. With the educational package her discovery trips are now possible. In this way, Julia is able to spend a lot of time with her friends. And get to know new ones – of the four-legged variety.

Trips with day care centres



HOW YOU CAN TAKE PART:

- ▶ Your child can now go on day trips organised by the school or day care centre – and go with them on visits to exhibitions, the theatre, enjoy castle tours or even go pedal boating.
- ▶ Ask the teachers or childcare staff to let you know in good time about any upcoming day trips. Ask your child as a matter of routine whether any excursions are lined up.
- ▶ If a day trip or class excursion is planned, notify the *job centre**. You will receive a voucher on request or the costs will be covered.
- ▶ As before, trips lasting several days will be paid for.

*Please read the information on page 14.

TIPS FOR DAY CARE CENTRES AND SCHOOLS

- ▶ Do you have a day trip planned for your care group or class? The earlier the parents are informed of it the better.
- ▶ Let people in your day care centre or school know about the new range of services. It applies to all children in need attending a day care centre or school.

School materials



HERE IS HOW IT WORKS:

- ▶ The *jobcenter** transfers** to you a total of 100 euros every school year for the child's own basic school kit: 70 euros at the beginning of the school year and 30 euros in the second half of the year.
- ▶ Keep yourself informed: teachers often hand out lists at the beginning of the school year. They contain items which your child needs to take part in lessons.
- ▶ Pencils and exercise books, folders and watercolours, pocket calculators and school bags – these are just a few of the things which make up a school kit.
- ▶ Make a point of regularly asking your child if he or she has all the necessary school materials. Do they need a new notepad, exercise books or ink cartridges?

* Please read the information on page 14.

** Families entitled to children's allowance or housing benefit must submit a separate application for this.

Transportation to/from school



HERE IS HOW IT WORKS:

- ▶ Pupils who attend the nearest school for their chosen course of education and depend on school transport, e.g. by bus or train, will receive a transport allowance, if the cost is not covered by anyone else and it is not deemed reasonable for such costs to be met from basic needs assistance (own share). Essentially this affects secondary level II school pupils (e.g. grammar school upper level).
- ▶ If your child is able to use the monthly travel card for private purposes as well, you pay a share.
- ▶ Submit an application at the *Jobcenter**. The required allowance will then be transferred to you directly.

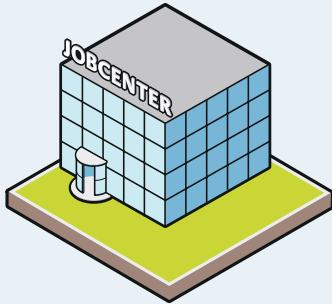
* Please read the information on page 14.

Simple and uncomplicated. Here is how it works in practice ...

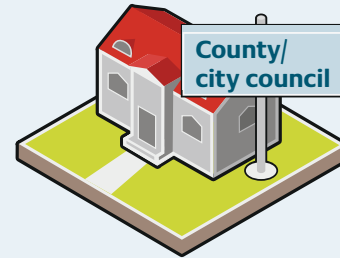
The educational package applies to all families who qualify for benefits according to Book Two of the German Social Code (particularly unemployment benefit II or social allowance), or receive social assistance, housing benefit, children's allowance or benefits according to section 2 of the Asylum Seekers Benefits Act. Calculation of the benefits is simple and unbureaucratic.

The implementation of the educational package is organised locally by the county or city councils and may differ from the procedures described. However the basic principle is:

- ▶ Those who are in receipt of **unemployment benefit II** or **social assistance** would normally contact their job centre for educational package benefits. It is processed there by the county and city councils. For questions relating to standard benefits (unemployment benefit II or social allowance) the job centre also remains your point of contact. It is there you submit your application and from there the money is transferred every month.



- ▶ Job centres are not responsible for families in receipt of **social assistance, housing benefit, children's allowance** or benefits according to **section 2 of the Asylum Seekers Benefits Act**. The county or city councils (who can be reached, for example, at the town hall, public administration office or at the local government office) will provide contacts for these families. As a transitional measure, the Family Benefits Office will accept applications from families in receipt of housing benefit or children's allowance.



... and all the benefits of the educational package at a glance.

All that is left now is to take part! Ask about what's on offer locally. Have a word with clubs and associations in your area which are not yet part of the educational package. Submit your applications as early as possible and always keep receipts, invoices and registration forms. Here is what is included in the educational package:



LUNCH AT DAY CARE CENTRES, SCHOOLS AND AFTER-SCHOOL CARE CENTRES



CULTURAL, SPORTS AND LEISURE ACTIVITIES



DAY CARE CENTRE AND SCHOOL TRIPS



LEARNING SUPPORT



SCHOOL MATERIALS



**TRANSPORTATION TO/
FROM SCHOOL**

The following applies to persons entitled to benefits according to Book Two of the German Social Code (particularly unemployment benefit II or social allowance); if you have any questions please contact your local job centre. They will be only too pleased to help. The county or city councils (who can be reached, for example, at the town hall, public administration office or at the local government office) can provide families in receipt of social assistance, housing benefit, children's allowance or benefits according to section 2 of the Asylum Seekers Benefits Act with information on their relevant contact for the educational package. As a transitional measure, the Family Benefits Office will accept applications from families in receipt of housing benefit or children's allowance. Information on the educational package can also be obtained from the public telephone service of the Federal Ministry of Labour and Social Affairs on **0180 5 / 67 67 21***** and at **www.bildungspaket.bmas.de**.

Publisher:

Federal Ministry of Labour and Social Affairs
Public Relations and Internet
10117 Berlin

If you would like to order a copy of this brochure:

Order no.: A 857be
Tel.: 0180 5 / 77 80 90***
Fax: 0180 5 / 77 80 94***

Status: August 2013

By post: Publikationsversand der Bundesregierung
Postfach 48 10 09
18132 Rostock

Pictures courtesy of:

Photographer: Sven Schrader
Page 2: dpa

E-mail: publikationen@bundesregierung.de
Internet: www.bmas.de

***Fixed price of 14 cents/min from landlines and max. 42 cents/min. from mobile networks.